

Electric Fitting for Aerial Insulation Conductor

Different types of C clamp



JLC C type Clamp



SCK equipment clamp



JLC-CW temperature clamp



SCB-CW temperatuer transferor clamp



SCK-CW temperature measurement equipment clamp



JCD

JCD clamp for meter box

Torque clamp / lug



JBY energy-saving torque clamp



PGA energy-saving torque clamp



shear bolted lug

Wedge connector and tool



JXL wedge connector



JXD grounding wedge connector



self-locking wedge connector



Hydraulic hand tool



gun with bullets

H type compression tap connector



LH connector



LH1 connector



LH2 connector

Insulating Piercing connector



JJC Piercing connector



JBC piercing connector

Grounding Earth clamps



JBCD piercing grounding clamp



JDL grounding clamp



BYD electricity testing ground clamp

Lightning proof electrical fittings



FDL-A/B



FHJ-A/B



FDL-D



FDL-E

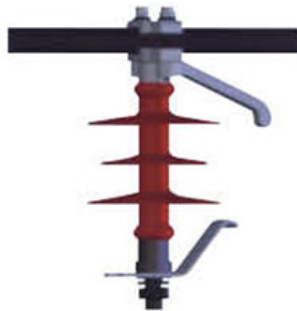
JY/LY Connecting tube with insulation cover



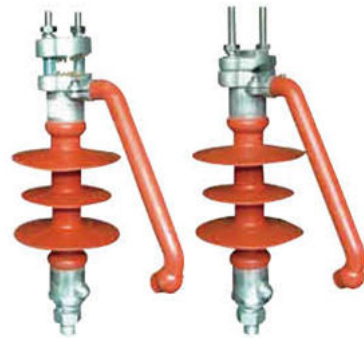
Lightning Protectors



FH line-type lightning protector



FH overhead lightning protector



FHPQ puncture type lightning insulator

High voltage cable cleat



JGW



JGH



JGHD



JGWD



JGP



JGW



JGPD



JGPD-H

Strain Tension Clamps and Suspension Clamps

Different types of strain clamps



NXJ4-A four core cluster strain clamp



NXJ4-B four core cluster strain clamp



NXJ4-C four core cluster strain clamp



NXJ wedge insulation strain clamp



NXJG-C wedge insulation strain clamp



NXJG-Q wedge type insulation strain clamp



NXJG-C wedge insulation strain clamp



NXL wedge type strain clamp



NLL-A bolted type strain clamp



NLL bolted type strain clamp



NLL-J bolted type strain clamp



NLL-S bolted type strain clamp



NXH strain clamp



NY 耐张线夹
NY series strain clamp



NY 系列耐张线夹
NY series strain clamp



NB 耐张线夹
NB series strain clamp



NY 耐张线夹 (钢锚整锻)
NY series strain clamp



耐张线夹钢锚
Anchor



NY-G 钢绞线用耐张线夹
NY-G strain clamp for steel wire

Different types of suspension clamps



XJG



XJG-1



XJG-2



XJG-3



XJG-4



XGH 铝合金线夹 (提包式)
XGH aluminium alloy
clamp(envelop type)



XGF 型悬垂线夹 (下垂式)
XGF suspension clamp
(hang-down type)



XGF 型悬垂线夹 (上杠式)
XGF suspension clamp
(carried-up type)



XGF 型悬垂线夹 (高海拔用)
XGF suspension clamp
(for high height)



XGF 型悬垂线夹
XGF suspension clamp



XGJ 型悬垂线夹
XGJ suspension clamp



XCS 型垂直排列双线夹
XCS perpendicular double clamp



XCS 型垂直排列双线夹
XCS perpendicular double clamp



XGU 悬垂线夹
XGU suspension clamp



XGU 悬垂线夹 (带 U 形挂板)
XGU suspension clamp
with U-clevis



XGU 悬垂线夹 (带碗头挂板)
XGU suspension clamp
(with socket-clevis eye)



XTS 双跳线悬垂线夹
Suspension clamps for Twin
jumper conductors

Terminal connector and devices for equipments

T-Connector and insulation cover



TJL



TJT



TJG



insulation cover

Cu-Al transition branch line clamp and insulation cover



JFL clamp with insulation cover



JFG clamp with insulation cover



Span service type clamp and insulation cover



JKG-1



JKG-2



JKG-3



JKG-3 with insulation cover

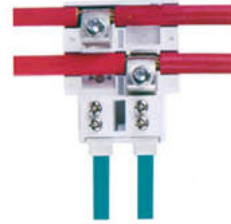
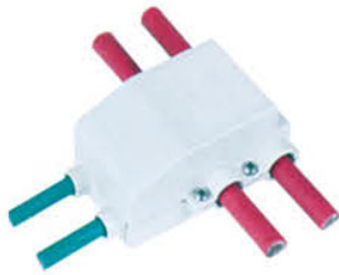


JKL-1



JKL-2

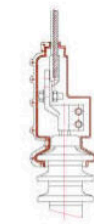
DLF shunt clip



Electric power safety shield



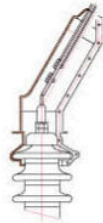
G10-01



G10-02



G10-20



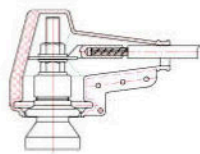
G10-03



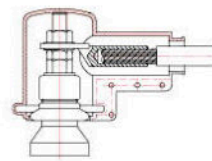
G10-06



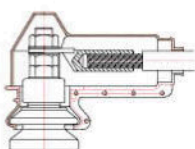
G10-07



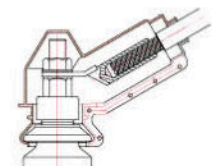
D1-01



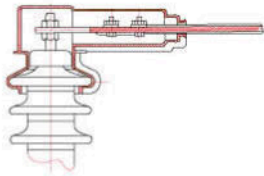
D1-02



D1-11



D1-12



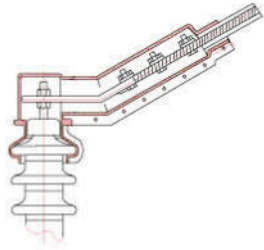
S10-01



S10-09



S10-03



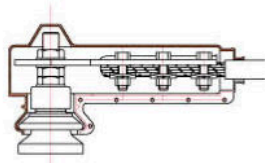
S10-02



S10-04



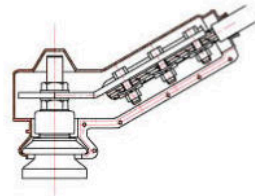
S10-07



S11-01



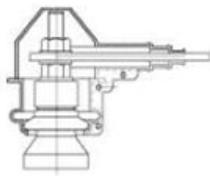
S11-11



S11-02



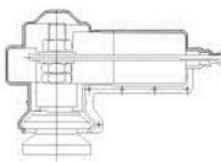
S11-12



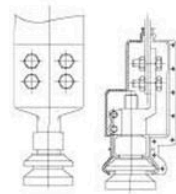
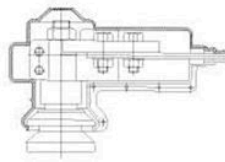
M1-01



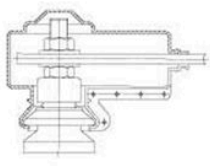
M1-02



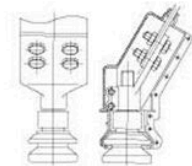
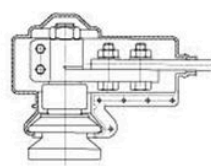
GM1-01A



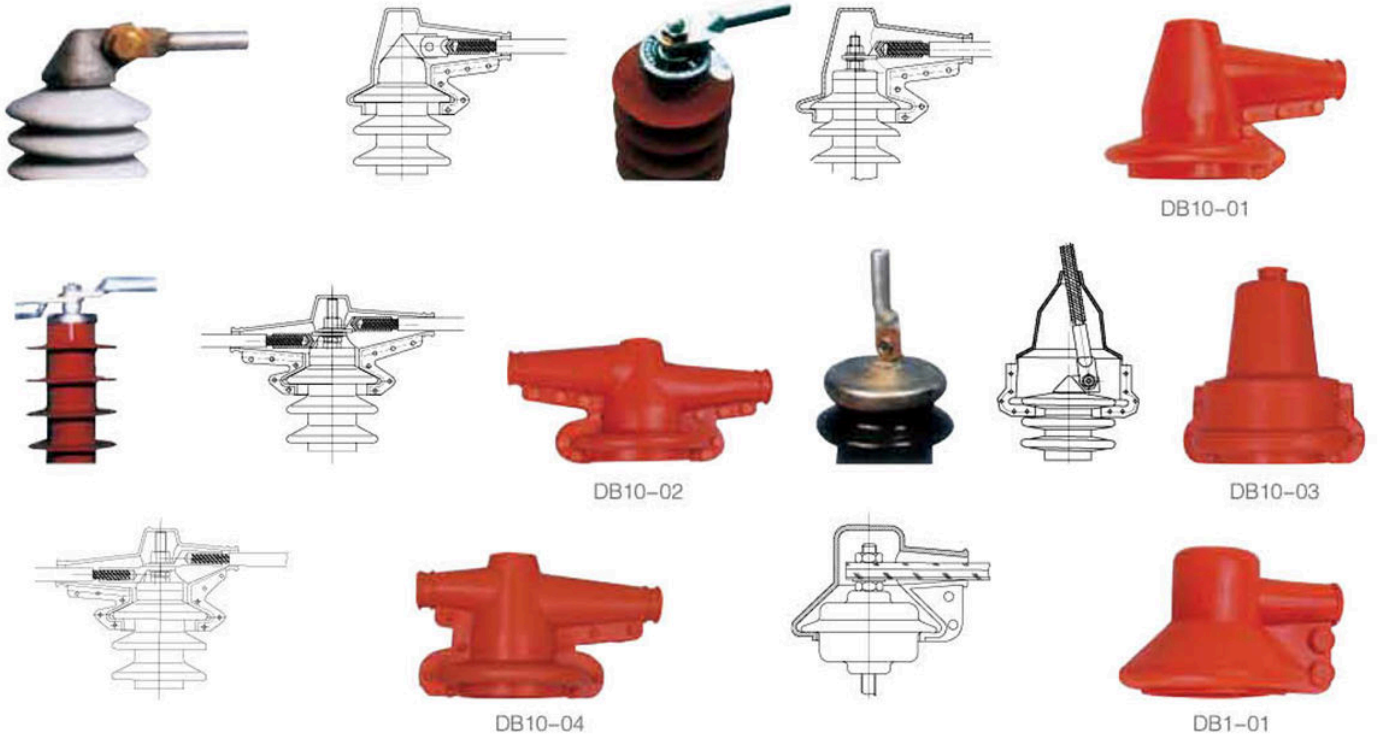
GM1-02C



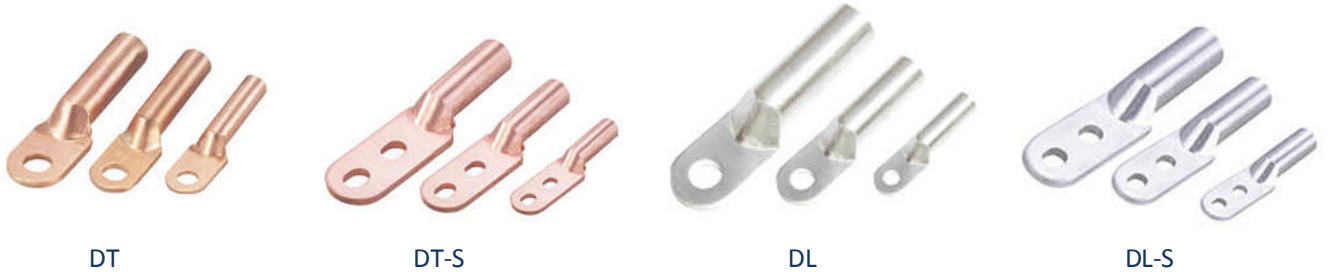
GM1-02A



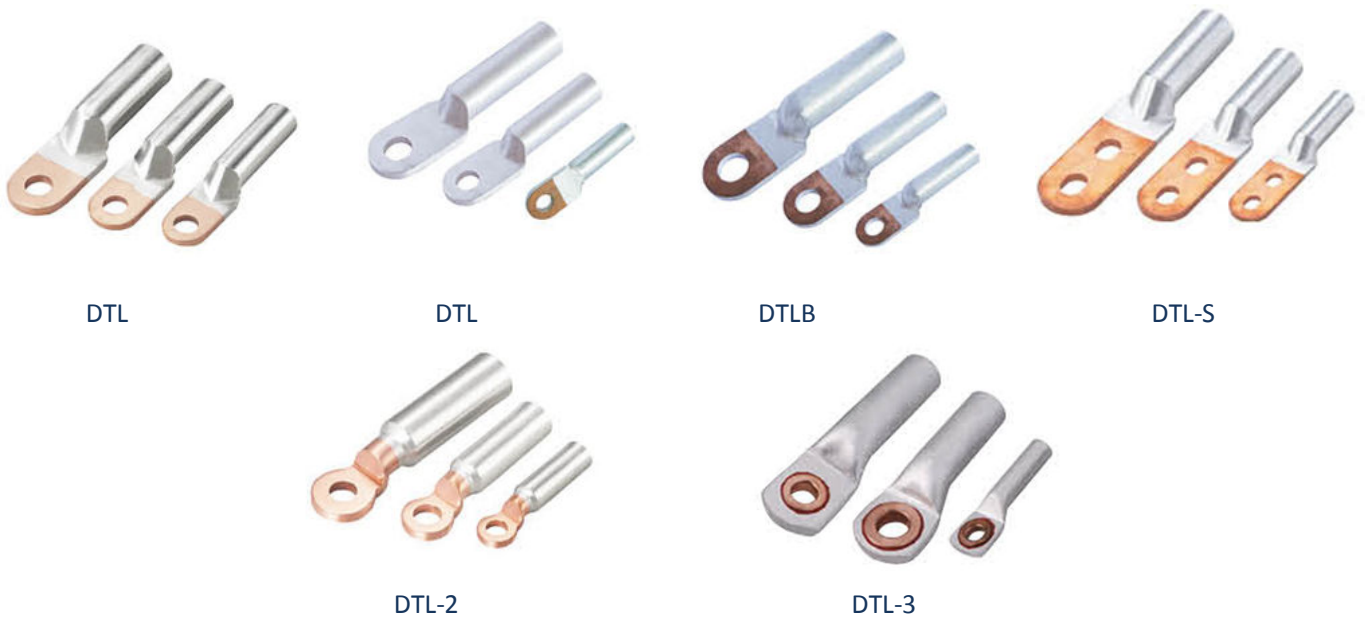
GM1-02B



Cu/AL connecting terminals



Cu-AL transitional connecting terminals



Brass Crimp Terminals



DTGY



DTGS



OT

Water proof connecting terminal



DT-F

Quick connect terminals



SD



SD2



SD3



SD4

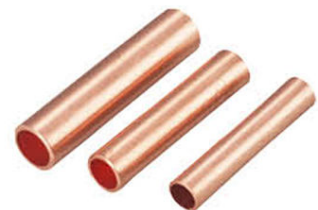
Connecting tubes



GTL



GL oil plugging /passing through type



GT oil plugging /passing through type

Connectors for transformer



SBT



SBT-1



SBG



SBG-1

Connectors for equipments



ST



SLG-A



SLG-B



SLS-A



SLS-B



SLSG



SY



SYT



SYG



SY-N



JTL



YZ



WCJB



T/J bolted clamp



CCT copper clamp



Cu-AL compound plate



transitional plate

Bus expansion joints



MS



MST



MSS



MSSB

Parallel grooved clamps



JBL-1



JBL



JB



JBT



JBT-1



JBTL (soldering type)



JBTL (friction welding)



CAPG

Protective fittings

Spacers and shielding rings



MRJ 双 (三) 分裂间隔棒
MRJ spacers for double (3) conductor



MRJ 双分裂间隔棒
MRJ spacers for double conductor



JS 软母线间隔棒
JS bus-bar spacing board



SJ 软母线间隔棒
SJ bus-bar spacing board



FP 屏蔽环
FP shielding rings



FP 屏蔽环
FP shielding rings



FJV 均压环
FJV equal voltage rings



FJ 均压环
FJ equal voltage rings



FJP 均压屏蔽环
FJP grading & shielding rings

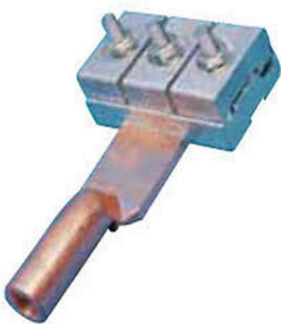
T connectors



TL, TLS 系列 T 型线夹
TL, TLS series T-connector



TY 系列 T 型线夹
TY series T-connector



T 形铜铝线夹
TL type Cu-Al clamp



TLY T 形线夹
TLY T-connector



TL 单导线 T 形线夹
TL Connectors for single conductor



TLS、TL 形线夹
TLS,TL connector



TL 双导线 T 形线夹
TL Double conduct T-connector



TYS 双导线 T 形线夹
TYS Double conduct T-connector

substation fittings



MNL 户内矩形母线固定金具
MNL indoor support for
rectangular bar



MWL 户外矩形母线固定金具
MWL outdoor support for
rectangular bar



MNP 户内矩形母线固定金具
MNP indoor support for
rectangular bar



MWP 户外矩形母线固定金具
MWP outdoor support for
rectangular bar



MJG 矩形母线间隔垫
MJG spacers for rectangular bar



MCN 槽形母线固定金具
MCN supports for channel bar



MCW 槽形母线固定金具
MCW supports for channel bar



MCW 槽形母线间隔垫
MCG spacers for channel bar



MGD 端部固定金具
MGD supports for end fixing



MDG 单导线固定金具
MDG supports for single conductor



MDU 管母线悬挂金具
MDU suspending fitting for
tubular bus



MGXX 管母线悬挂金具
MGXX suspending
fitting for tubular bus



MGJ 管母线支架
MGJ Supports for tubular bar



YH 组合母线圆环
YH ring supports for bundle cables



MGT 管母线 T 接金具
MGT T-connector for tubular bus



MGT 管母线 T 接金具
MGT T-connector for tubular bus



MGTT T 型线夹
MGTT T-tubular bus



MJ 管母线接头
MJ Bus-bar joint



MGZ, MGF 管母线终端球、封端盖
MGZ, MGF Tubular bus end-caps and ball



MG/MR 管母线与导线接续金具
MG/MR Splicing fitting for tubular and conductor



MGDD 型管母线伸缩线夹
MGDD Expansion joints for tubular bar



MGS 型管母线伸缩线夹
MGS Expansion clamp for tubular bar



MGS 型管母线伸缩线夹
MGS Expansion clamp for tubular bar



KLMG 型跨路母线过渡金具
KLMG Crossing Bus-bar transition fittings



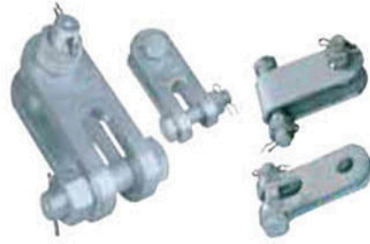
管母线组装图例
Tubular bus-bar assemble drawing

Line fittings

Link fittings



GD 挂点金具
GD hanging point fittings



UB,Z,ZS 型直角挂板
UB,Z,ZS right angle hung plates



P、PS 型平行挂板
P,PS type parallel clevis



U 型挂环
U Type Shackle



U 型螺丝
U-Bolt



Q、QP 型球头挂环
Q,QP type ball-eye



Q/Q-U 型球头挂板
Q/Q-U type ball eyes



W、WS 型碗头挂板
W,WS type socket clevis eye



BD 避雷线悬垂吊架
BD ground wire hangers



PH 型延长环
PH type extension ring



YL、YLP 拉杆
YL、YLP Extension rods



ZH/QH 型挂环
ZH/QH link



LS 联板
LS Yoke plate



L 型联板
L Yoke plate



PT 调整板
PT adjusting plates



LF 型联板
LF Yoke plate



LJ 型联板
LJ Yoke plate



QY 型牵引板
QY Towing plates



DB 型调整板
DB Adjusting plates



ZCJ 支撑架
ZCJ support brackets

Splicing fittings



JBB 铁并沟线夹
JBB iron parallel groove clamp



DG-(G.BG) 接地线端子
DG-(G.BG) Ground Terminal



JB 铝并沟线夹
JB Parallel groove clamp



JBD、JYD 接续管
JBD、JYD splicing sleeves



JY 钢芯铝绞线用接续管
Splicing sleeves for JY aerial insulation line



JTB 接续管 (爆压)
JTB splicing sleeve (explosive)



JT 接续管 (钳压)
JT splicing sleeve (notch)



JYT 跳线线夹
JYT jumper clamp



JX 补修管
JX repair sleeve



FYB 预绞丝补修条
FYB preformed repair tape

Protective fittings



FJQ (FFJQ) 型间隔棒
FJQ (FFJQ) spacer for double conductor



TJ 型跳线间隔棒
TJ spacer for jumper conductors



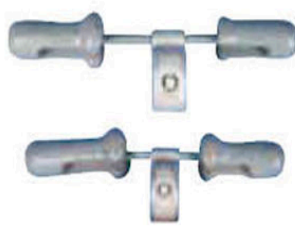
FJZ 型双导线用间隔棒
FJZ spacer for double conductor



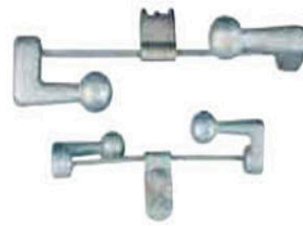
招弧角
Arcing Horn



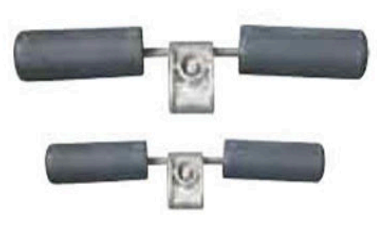
FR 防振锤
FR dampers



FR 防振锤
FR dampers



FDZ 防振锤
FDZ dampers



FF(FD-L) 防振锤
FF(FD-L) dampers



DB 防振锤
DB dampers



DBY 预绞丝防振锤
DBY dampers



FRY 预绞丝防振锤
FRY dampers



FYH 预绞丝护线条
FYH preformed armor rod



FLD 铝包带
FLD aluminium armor tape



ZC 型重锤片
ZC type counter weights pieces



悬重锤及配件
Suspension counter weight
aluminium and accessories



FP 均压屏蔽环
FP grading and shielding rings
for 500kv line

Wire pulling fittings



心形环
Shackles



JK 钢线卡子
JK steel guy clip



UL 型挂环
UL shackles



NX 楔型线夹
NX clamp wedge type



NUT 线夹 (不可调试)
NUT clamp



PD 型挂板
PD straps



LV 双拉线用联板
LV Yoke plates for double guy wire



防盗帽及专用工具
Safe cap and special tool



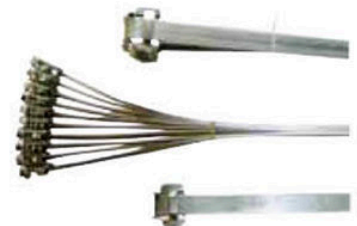
NUT 线夹 (可调试)
NUT clamp (adjustable type)



花兰螺丝
Turn buckles



NLY 线夹
NLY Clamp



L 型连接件
L-shaped connecting piece



不锈钢扎带
Stainless steel cable tie



牙型不锈钢扎扣
Tooth form stainless steel buckle



不锈钢扎带 / 扎扣 / 配套工具
Stainless steel cable tie/buckle/matching tools

High voltage insulators



FXBW4-10/70-WQ



FXBW4-10/70-00



FXBW4-10/70-DD



FXBW4-10/70-DQ



FXBW4-10/70-UD



FXBW4-10/70-YQ

FXBW4-500/160-WQ

FXBW4-330/160-WQ

FXBW4-220/100-WQ

FXBW4-220/160-WQ

FXBW4-110/70-WQ

FXBW4-110/100-WQ

FXBW4-110/120-WQ

FXBW4-66/70-WQ

FXBW4-66/100-WQ

FXBW4-35/70-WQ

FXBW4-35/100-WQ

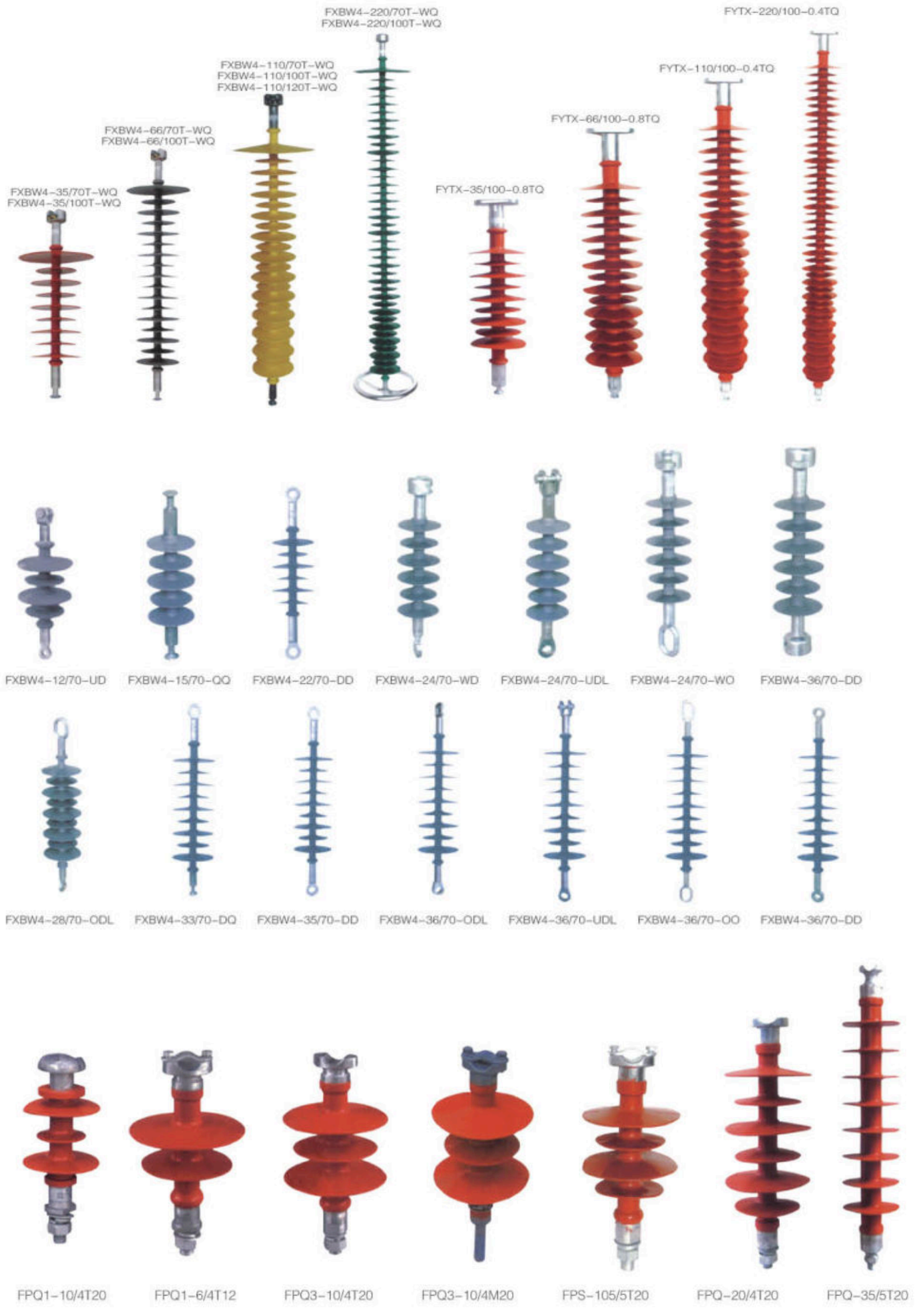
FXBW4-20/70-WQ

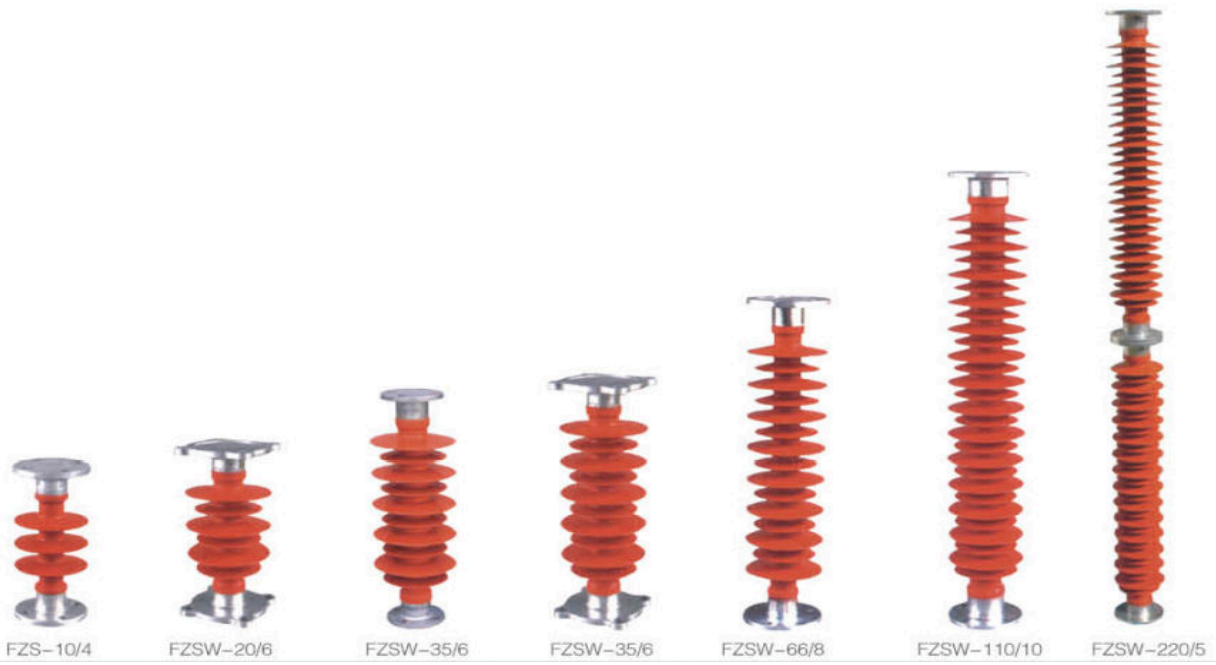
FXBW4-20/100-WQ

FXBW4-10/70-WQ

FXBW4-10/100-WQ







Power cable accessories





NYL 型
type(10kV)



NLS 型
type(10kV)



NYZ 型
type(10kV)



NLS 型 (单芯)
type(single core)(35kV)



LS 型
type(1 kV)



WSY 型
type(10kV)



WSY 型
type(35kV)



JSY 中间接头 (10kV)
JSY intermediate joint(10kV)



JLS 中间接头 (10kV)/(35kV)
JLS intermediate joint(10kV)/(35kV)

10kV 交联电缆热缩户内、外终端
10kV cross-linking cable indoor and outdoor terminal

